

Theatre at Westbury



ROUND



HALF ROUND

Updated August 2019



About Westbury....

- The Theatre at Westbury is Long Island's premiere indoor concert venue located in the heart of Nassau County and approximately 40 miles from Midtown Manhattan.
- The Theatre at Westbury was founded as the Westbury Music Fair in 1956 and operated as a summer tent theatre until 1966 when the theatre became a year round facility. Westbury has been host to the biggest names in rock and pop including appearances by Michael Jackson and The Jackson Five, Sonny & Cher, Diana Ross and The Supremes and many more of that era's pop icons. Among the theatre's many historic performances was the the April 19, 1968 performances of rock legends The Doors, and the March 30, 1968 performance by The Who during their Magic Bus Tour, and the legendary February 23, 1975 appearance of Bruce Springsteen.
- Numerous classic rock acts continue to make Westbury their venue of choice when they play Long Island including the Moody Blues, ASIA, YES, Steve Winwood, Pat Benatar, Joe Walsh, George Thorogood & the Destroyers, the Doobie Brothers, The Moody Blues, ZZ Top, Crosby, Still & Nash, Foreigner, Bret Michaels, Ringo Starr and Bob Weir & Ratdog.
- The venue has played host to many comedy artists such as Don Rickles, Jerry Seinfeld, Joan Rivers, Lisa Lampanelli, Lewis Black, Jim Breuer, Ron White, John Pinette, Brian Regan, just to name a few.



ROUND



HALF ROUND

TABLE OF CONTENTS

- **Contacts**
- **General Theatre Information**
- **Front of House Specs**
- **Security**
- **Monitor Specs**
- **Lighting Specs**
- **Stage Specs**
- **Microphone package**
- **House Backline**
- **Theatre Floor Plan**
- **Hotel information / Directions**
- **Local Area information**
- **Diagrams**

Venue	Personnel
Anthony "Race" Castoro Production Manager Office: 516-247-5202 Racecastoro@livenation.com	Kate Walsh General Manager Office: 516-247-5218 KateWalsh@livenation.com
Michael Connors Operations Manager Office: 516-247-5208 Michaelconnors@livenation.com	Sean Striegel VP Booking Office: 917-421-5164 SeanStriegel@livenation.com
Brian O'Boyle Talent Buyer Office: 516-247-5217 BrianOBoyle@livenation.com	Heather Federlin Booking Coordinator Office: 516-247-5204 HeatherFederlin@livenation.com
Charlie Trantum Head Sound – Shop Steward Phone: 516-297-5115 Catmandosound@aol.com	Rita Tilton Box Office Manager Office: 516-247-5209 Rita Tilton@livenation.com
Tom Fagan Head Lighting Phone: 516-650-8249 Vettenam@hotmail.com	Pauline Atkinson Box Office Manager Office: 516-247-5220 PaulineAtkinson@livenation.com
Matthew Ackermann Marketing Manager Office: 516-247-5205 MatthewAckermann@livenation.com	

GENERAL THEATRE INFORMATION

- **CAPACITY** - 2,800 seats set in the round. 1,200, 1,600 or 1,800 seat capacity in the half round set up
- **STAGE** - In the round configuration, is a painted masonite turntable 24 feet in diameter, surrounded by a 3'5" stationary area. In the half round configuration, there is 30 feet 10 inches (width at center) of usable stage space. The stage is 1 foot 10 inches above the house floor. Suspended over the stage is a circular grid approximately 15 feet above deck level from which lighting and sound equipment is hung.
- **ORCHESTRA PIT** – The orchestra pit is trapezoidal in shape. The side adjacent to the stage is 26 feet 10 inches in length. The side furthest from the stage is 46 feet in length. The pit is on the average of 12 feet 6 inches wide.
- **TURNTABLE** - The turntable revolves at a variable speed controlled from the lighting booth. All audio and electric cables are brought to the stage through an 8-inch (ID) pipe in the center of the turntable. Turntable can move in forward and reverse.
- **LOADING DOCK** - Will accommodate any size truck. Trailers may remain parked at the dock all day. Tractors may need to be moved due to fire lane restrictions. Small trucks, vans and buses may be unloaded at the stage door.
- **SHORE POWER** - Shore power is available for two buses (50AMP, single phase, 220V).
- **FIRE REGULATIONS** - Every effort must be made to conform to the local fire regulations. No pyrotechnic devices are permitted in the Theatre. No exits may be blocked.
- **LOCAL UNIONS** - The stagehands are governed by I.A.T.S.E. local 1. The musicians are represented by A.F.M. local 802. The theatre is registered with actor's equity.
- **RECORDING** - The use of cameras and recording devices of any kind is prohibited by law in the theatre. The use of video and film or audio equipment falls under the jurisdiction of the I.A.T.S.E. and may be subject to site and union fees. Please contact the Production Manager two weeks prior to engagement.

BACKSTAGE INFORMATION

- **BACKSTAGE AND THEATRE ACCESS** - All persons in the backstage area must have the appropriate pass. All guests must have the appropriate pass and ticket. Please check your executed rider for the correct number of tickets to which you are entitled to at this theatre. When your list is complete, bring it to the production office, along with any necessary guest passes. Please indicate on the list those who are to have backstage access. Passes can be placed with the ticket envelopes and left at the box office.
- **DRESSING ROOMS** - There are three dressing rooms which have a make up area, full bath and living area. In addition, there are four small private rooms, one large chorus room and one production office. Four bathrooms and two showers are located in the common area near the dressing rooms.
- **WARDROBE** - A steamer & iron are available for artists use upon request. Laundromat and same day dry cleaning service are available at the expense of the Artist. The theatre is not responsible for any damages to garments. The Production Manager **MUST** be notified in advance, if a person is necessary for steaming & ironing. Please be aware that these are not professional seamstresses.
- **STORAGE** - Storage space is at a **MINIMUM**. It may be necessary to place empty and “DEAD” cases or materials back on the truck.
- **CATERING** - The kitchen is for the preparation of meals and snacks for those appearing at the theatre. It is not to be used except by the authorized personnel. Catering will be advanced 7 days prior to engagement. After show & bus catering is not provided. Alcoholic beverages cannot be distributed as per local ordinance.
- **SECURITY** – In House Security is provided. For specific Security needs, please advance two weeks prior to show.
- **UNION BREAKS** - Every effort will be made to comply with the local union regulations. The stagehands are governed by I.A.T.S.E. Local 1. The musicians are represented by A.F.M Local 802.

SECURITY

In our ongoing commitment to provide the safest and most comfortable experience for our artists and guests, all working personnel, guests and artists will be expected to pass through a metal detector when entering the building. Your privacy and individuality is of the utmost importance to us so please understand our only concern is preventing weapons from entering the building. Our backstage is your home and we encourage you to go about your business as you would anywhere else.

In-House Security is provided. For specific security needs, please advance at least two weeks prior to the show.

Any security above our normal staffing levels – including meet and greets, signings and stage presence is subject to a fee.

MEET AND GREETs / MERCH

Any pre or post show Meet and Greets or Merch Signings are subject to staffing fees.

Please let us know asap to accommodate

RUNNER

Per Live Nation Clubs and Theatres policy, venue is unable to transport any artists, band, or crew personnel in venue vehicles.

Uber is available in the area and a list of car services can be provided at the cost of the tour.

SOUND INFORMATION

- **CONSOLES AND PROCESSING** – Midas Pro X series
- **POWER** - Mixing locations are permanent. Touring FOH consoles are set in our FOH position. All electric power for the sound system comes through a Topaz super noise suppressor isolation transformer. This transformer is rated at 45KVA supplying 3 phases 5 wire 100 amps 120 volts 60HZ, both in the booth and in the orchestra pit. Cam-lok tails and a 100 amp disconnect are available in the pit if attractions wish to use their own power distribution. All sound receptacles are of hospital grade isolated ground type.
- **MAIN FLOWN PA SPEAKER SYSTEM**
 - (6) hangs of 6 JBL VT4887A powered by Crown IT HD4x3500 amps with v5 processing
- **SUBS**
 - 6 JBL STX828S floor subs powered by 3 Crown 5000 VZ amps
- **FRONT FILL SPEAKER SYSTEM**
 - 8 - EAW 82s.
- **OVERHEAD STAGE MONITOR SPEAKER SYSTEM**
 - 4 – EAW 350s.
- **EFFECTS AND COMPRESSION ARE INTERNAL**



MONITOR WORLD

- **CONSOLE** - Avid Profile Mix monitor console. Set in orchestra pit.
 - 16 - EAW SM200 12" x 2" monitor speakers
 - 2 - Anchor self powered monitors (small)
 - 1 JBL PRX6185S-XLF self powered drum sub
 - 12 Crown 24 x 6 amps
 - 1 - Rane headphone amp
 - 1 - Whirlwind Splitter with 2 - ISO out with 1 fantail with male XLR for traveling monitor board.
- **MICROPHONES**
 - 8 - Shure SM58
 - 4 - Shure Beta 58
 - 8 - Shure SM57
 - 4 - Shure Beta 57a
 - 8 - Shure SM81
 - 4 - Shure 91
 - 2 - Shure beta 52
 - 7 - Sennheiser MD421
 - 6 - Sennheiser 406
 - 1 - Beyer M88
 - 1 - Beyer 500
 - 6 - Countryman ISO-Max lav mics
 - 8 - Crown GLM lav mics
 - 4 - Countryman active direct boxes
 - 4 - Pro-co passive direct boxes
 - 8 - Shure UR24D/SM58 UHF wireless W/ 8 x 58 capsules and 2 x 87 capsules and 3 Shure Beta 58 capsules.
 - 8 - Shure body packs

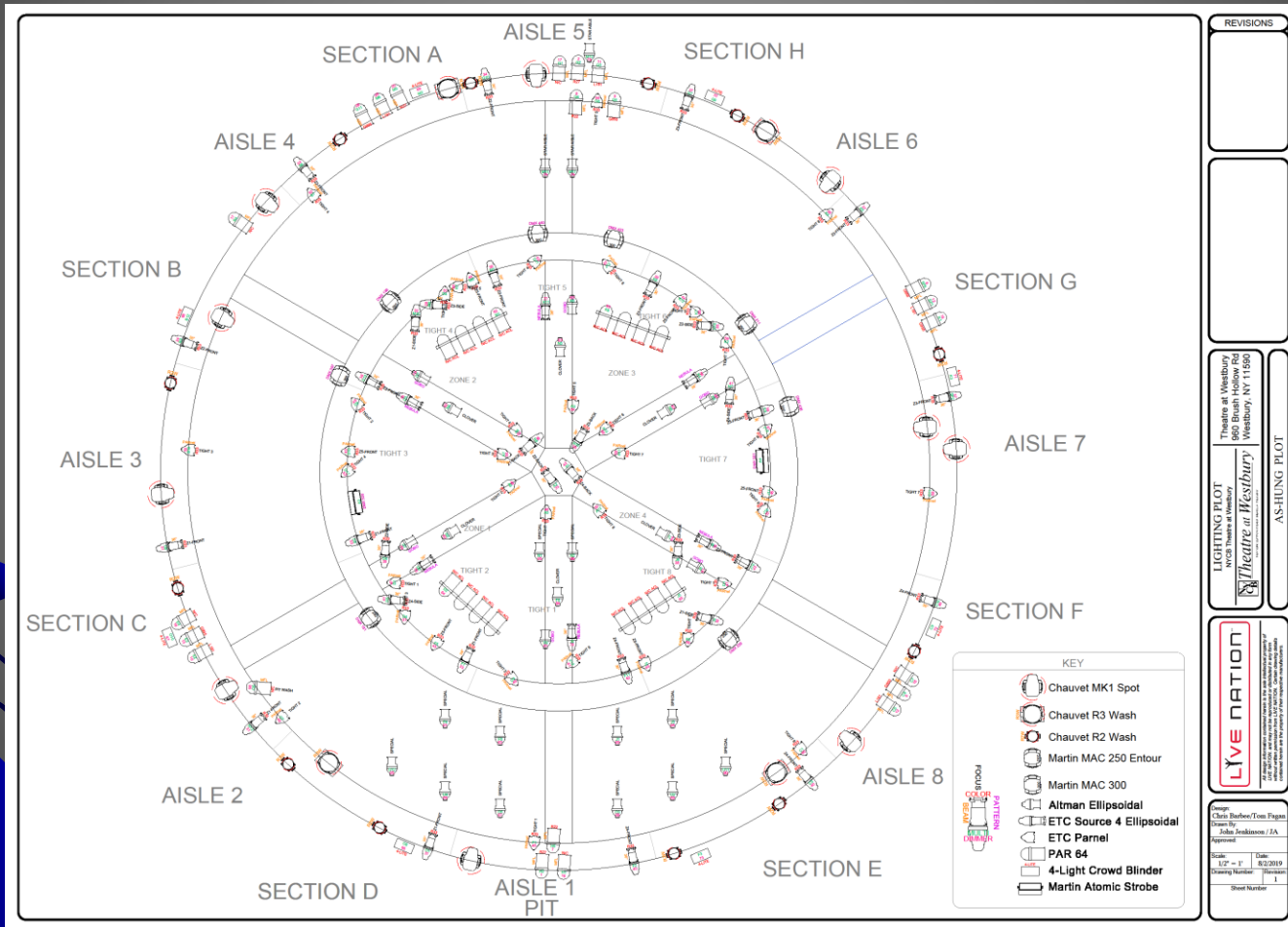


LIGHTING

- The House console is an Avo Tiger Touch with a side wing. There are 3 racks of Avolite ART2000 dimmers with a total of 144 2.4KW dimmers. The house is also equipped with a LeMaitre Radiance Hazer. F100 or D50's cannot be used in the theatre. They will set off fire alarms.
- The stage is divided into five areas for facial illuminations and a series of washes. The facial areas are gelled in Roscolux 33. The 6 outer and inner washes (Par 64 1k MFL and VN5P) are red, blue, congo, amber, magenta & no color. On the outer ring of the grid there are 10 Maverick MK1 Spot fixtures, 12 Chauvet R2 Wash fixtures, 4 Chauvet Rogue 3 RGBW wash units. In addition, there are two conventional gobo circuits, 4 sets of N/C ACL's up in the grid and 4 sets of N/C ACL's on the deck. Two Martin atomic 3000 strobes are also available. The Orchestra pit is washed with 8 NC Par 64 1K MFL/NSP. Twelve specials (Altman 6 x 12 1K Iris) are available. In the Proscenium set up the backdrop is washed with 9 Chauvet color rail LED strips.
- Follow spots are not part of the house equipment. Their use is not recommended due to the shallow angle from the rear of the theatre causing the first five rows opposite the follow spot to be blinded.
- The lighting system is repertory and MAY NOT BE ALTERED.
- There is One 3 phase 5 wire 100 amp 120 volt 60hz services to tie into. Approximately one hundred and fifty feet to two hundred feet of feeder cable is required to tie in if the racks are placed in the orchestra pit. If racks are placed in the backstage area, only twenty five to fifty feet of feeder is needed.

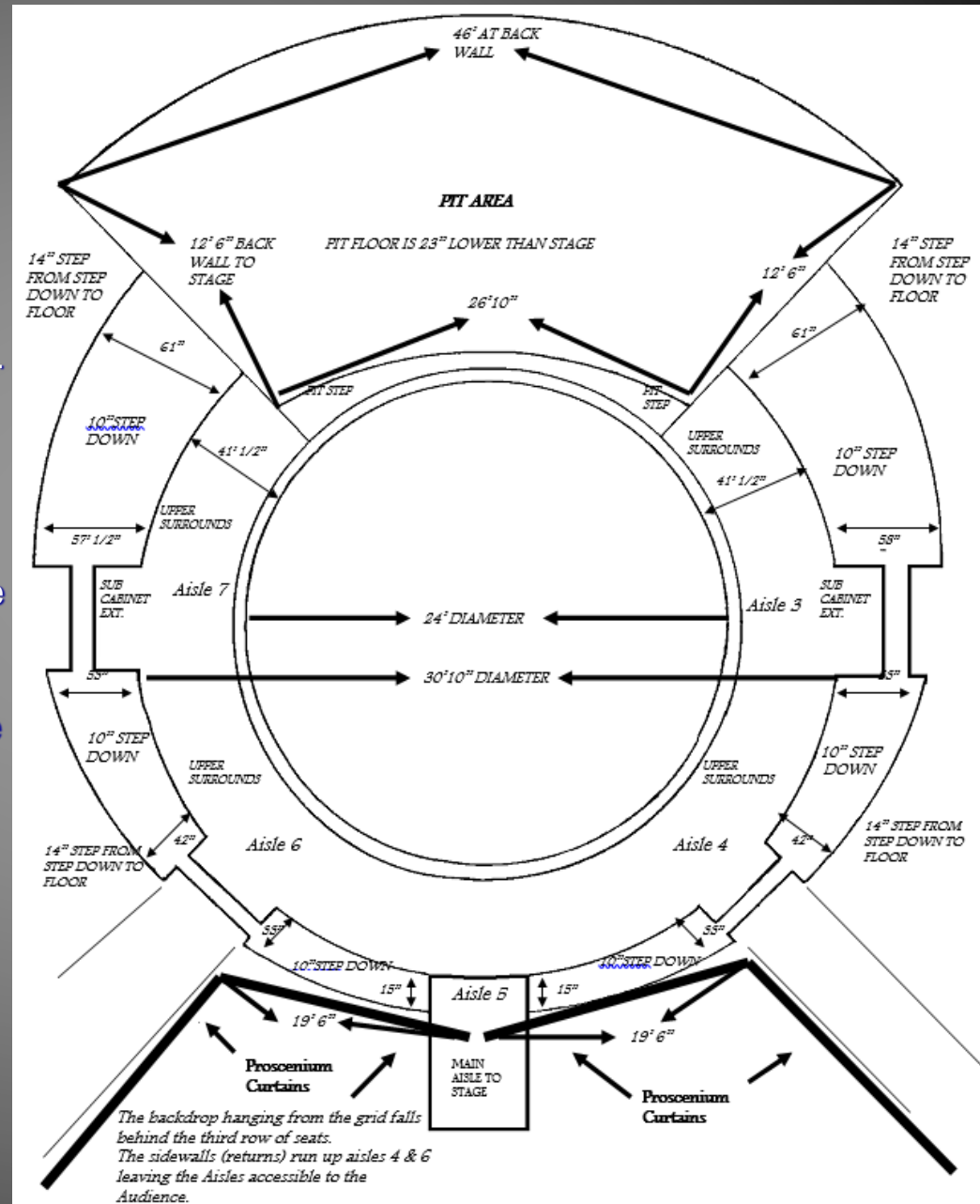


LIGHTING PLOT



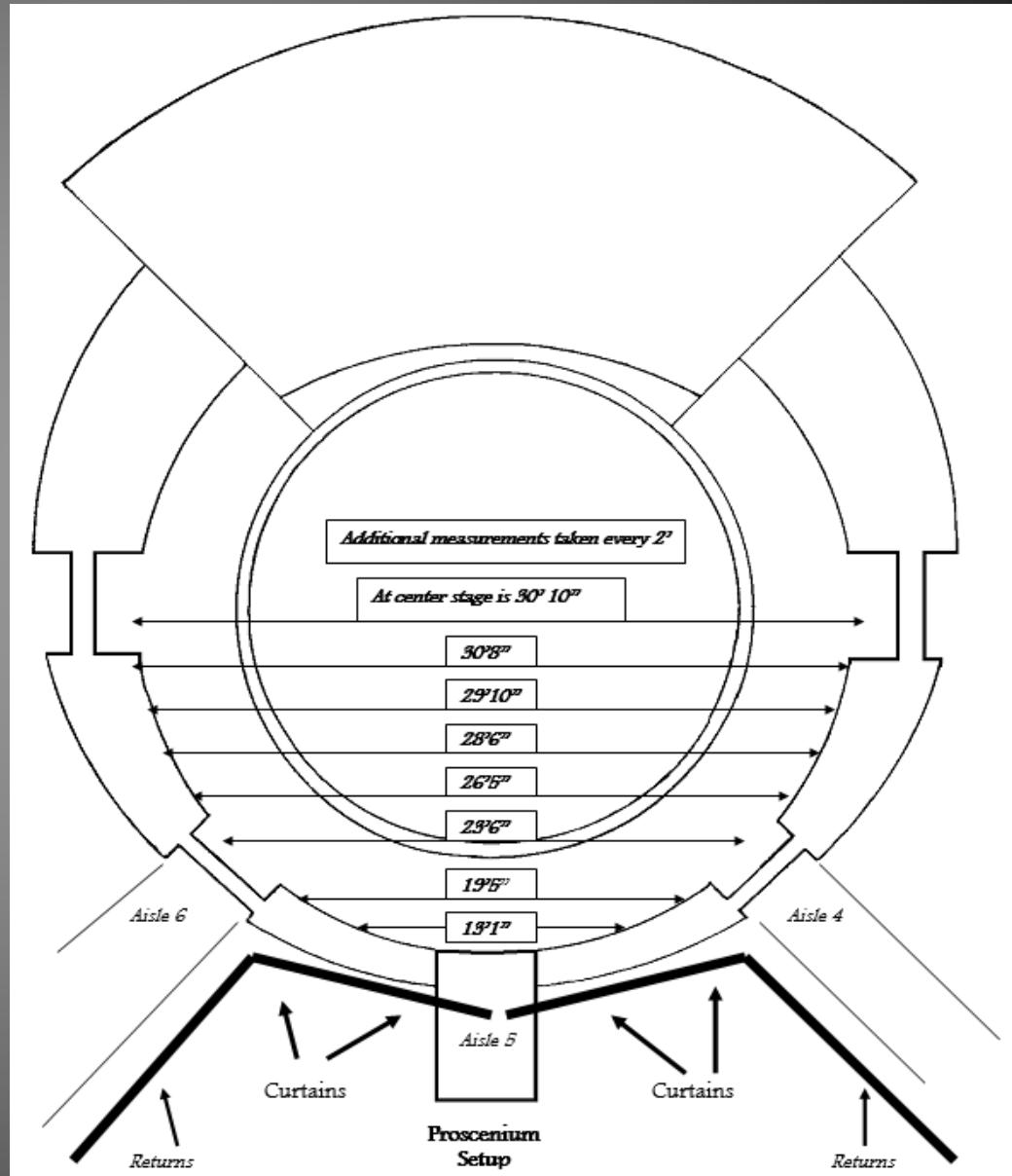
STAGE

- In the round configuration, at center of the stage is a turntable 24 feet in diameter.
- The turntable revolves at a variable speed controlled from the lighting booth. Revolutions per minute are dependant on weight and distribution of equipment.
- The turntable can move in forward and reverse.
- All audio and electric cables are brought to the stage through an 8-inch (ID) pipe in the center of the turntable.
- Suspended over the stage is a circular grid approximately 19 feet above deck level from which light and sound equipment are hang.
- The stage is 2 feet above the house floor.
- There are 16 aisles, only five of which run through to the stage.
- The orchestra pit area is trapezoidal in shape. The side adjacent to the stage is 26 feet 10 inches in length. The side furthest from the stage is 46 feet in length. The pit is on an average of 12 feet 6 inches wide.
- There are six Sharp 80" plasma screens hanging from the grid. Live Nation content is run through a Black Magic box - Extron switcher.
- There are three 12 x 12 motorized screens that hang from the center of the ring.



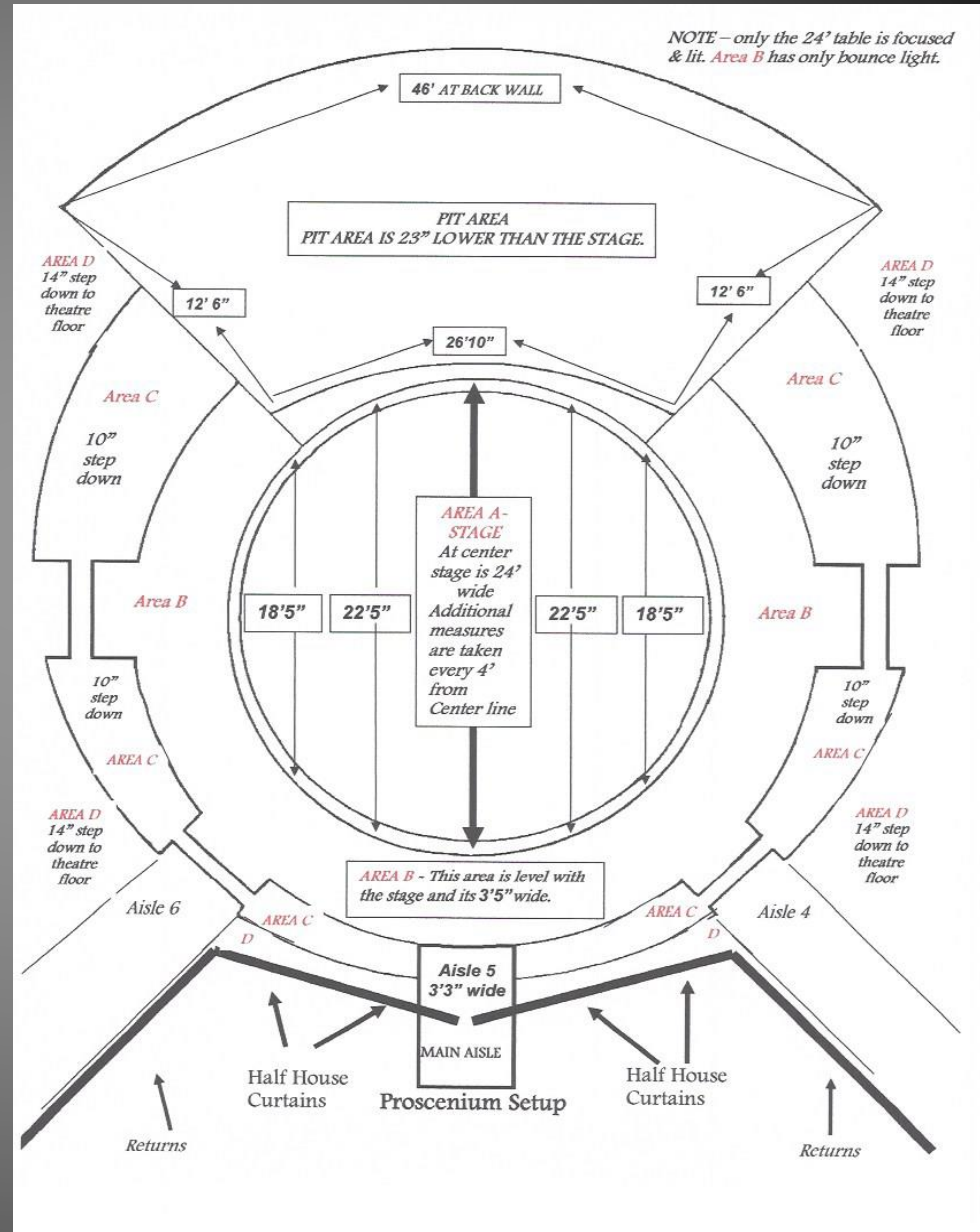
HALF ROUND

- The backdrop is approximately 40 feet wide by 20 feet high with an entrance split in the middle to allow for stage access.
- The backdrop hangs from the grid and falls behind the second row of seats. It can be black velour or pewter Textura shear.
- The sidewalls (returns) run up aisles 4 and 6 leaving the aisles accessible to the Audience.
- The stage at center is 30 feet 10 inches wide. As you move upstage the amount of useable space decreases.



HALF ROUND

- **ADDITIONAL HALF ROUND MEASUREMENTS**
- **AREA A** – ROUND REVOLVING PART OF STAGE – PAINTED GRAY
- **AREA B** – SAME LEVEL WITH STAGE – PAINTED BLACK.
- **AREA C** – 10" STEP DOWN FROM THE STAGE.
- **AREA D** – 14" STEP DOWN TO THEATRE FLOOR



HOUSE BACKLINE

Pianos

- 1 - Yamaha C2 5'8" Ebony Baby Grand
- 1 - Yamaha CP-80 Electric Grand Piano (NO midi)

Keyboards

- B3 with Leslie 122
- Kurzweil PC-88 (88 weighted keys)
- Roland RD600 (88 weighted keys)
- Roland D-50
- Roland RD-1000 digital piano
- Korg M-1
- Korg Trinity V3
- Korg O1W FD
- Korg Triton Pro
- Yamaha DX-7 original model
- Yamaha Motif 7
- Yamaha KX-88 midi controller (88 weighted keys)

Keyboard Electrics

- Mackie keyboard mixers (1202 & 1604)
- Alessi midiverb
- 12" keyboard monitors
- Roland U220 module

Drums

- Yamaha power recording drum kit
- DW 7002PX double pedal
- DW 5000 Single pedal
- Drum throne
- 3 - Snares – Yamaha & steel, 1 Piccolo
- 3 - Snare stands (2 regular, 1 stand up)
- 2 - 22" kick
- 1 - 14" floor tom
- 1- 16" floor tom
- 8", 10", 12", 13" and 14" rack tom
- Pair Zildjian new beat high hat cymbals – 14"
- 1 – 6" Zildjian A custom splash cymbal
- 1 – 10" Zildjian zbt splash cymbal
- 1 - China boy 18" Sabian
- 1 - 14" hanging cymbal
- 1 – 16" Zildjian Crash ZBT
- 1 – 17" Zildjian Fast crash ZHT
- 1 - 18" Zildjian crash ride cymbal
- 1 – 20" Zildjian crash cymbal
- 1 - 22" Zildjian ping ride cymbal
- 2 x 5 clear drum baffles

HOUSE BACKLINE

Percussion

- Musser pro-vibraphone
- Musser 3 ½ octave xylophone
- Musser Orchestra bells
- Ludwig pro-symphonic pedal tympani (26", 29") with gauges
- 2 - Tympani mallets
- 2 - LP timbales
- LP conga
- LP quinto
- LP tumba
- LP bongos
- LP temple blocks
- LP Chinese bell tree
- LP percussion table
- LP mark tree

Guitar Amps

- 2 - Roland JC-120 amps
- 2 - Fender twin reverb
- 1 Marshall DSL100H Head.

Bass Head & Cabinet

- 2 - Galien Kruger 800 RV bass amp
- 2 - Guild Hartke 4 x 10 bass speaker cabinet
- 2 - Guild Hartke 1 x 15 bass speaker cabinet
- 1 - Ampeg SVT 212 cabinet

Pedals

- 4 - Yamaha volume
- Yamaha sustain
- Roland sustain
- 1 - Roland volume
- 2 - Korg volume
- Kurzweil sustain
- Ensonic sustain
- VFP1 sustain
- Boss FV300H volume
- Ernie ball stereo volume
- PS-10 sustain
- PE-10 sustain
- PS-25 sustain
- WAH WAH
- Yamaha breathe control
- Korg sustain pedal

Stands

- Invisible stand
- Ultimate support stands
- Apex keyboard stands
- Single X stands
- 1 - Table stand
- 1 - 3 tier ultimate stands (old style – folding)
- 3 - 2 tier quick locks

HOUSE BACKLINE

Properties

- 4 - 4 x 8 drum risers w/8", 12" and 16" legs & skirting.
- 10 - Guitar stands
- Music stands
- Music stand lights
- Folding chairs
- 30" high stools backless
- 2 - 2' x 2' 2' cube tables
- Conductor riser – 2' x 2' x 6"
- 6' x 8' rugs for drums
- 24' diameter rug for stage (light gray)
- 9' x 12' oriental rug (brown tone)
- 4 x 6 rug
- 4 x 8 rugs
- 8 x 8 rug
- 26" black backless stools
- 2 - 24" black backless stools
- 2 - Small drink tables (30" high)

Toys

- Tambourines
- Hat trick
- Xmas bells
- 2 - Slide whistles
- Train whistle
- British police whistle
- Nightingale call whistle
- Siren
- Grinder
- 4 - Large cowbells & 2 - Small cowbells
- Vibra slap
- Anvil metal bar
- Sanders
- Set castanet's on block
- Set castanet's finger
- 3 - Triangles
- Rhythm tech shaker
- Wood blocks
- 4 - Wood sticks
- Metal plate
- 3 - Cuban shakers
- Checkered assorted shakers, mallets & hammers
- 1 - Pearl multi clamp

LOCAL HOTELS

Viana Hotel & Spa

3998 Brush Hollow Road
Westbury, NY 11590
(516)-338-7777
Contact: Alicia Montefusco
www.vianahotelandspa.com
Approx. 1 minute from venue

Melville Marriott Hotel

1350 Old Walt Whitman Road
Melville, NY 11747
(631) 351-8104 Direct Line
www.MarriottRewards.com
Approx. 15 minutes from venue

The Holiday Inn

369 Old Country Road
Carle Place, NY 11514
(516)-997-5000
www.hiwestbury.com
Approx. 10 minutes from venue

The Garden City Hotel

45 Seventh Street
Garden City, NY 11530
(516)-747-3000
www.gardencityhotel.com
Approx. 20 minutes from venue

The Hyatt Place of Garden City

5 North Ave
Garden City, NY 11530
(516) 222-6277
Contact: Andrea Novello
Approx. 15 minutes from Venue

Hampton Inn Jericho - Westbury

120 Jericho Turnpike
Jericho, NY 11753
(516)-997-2000
<http://hamptoninn3.hilton.com>
Approx. 1 minute from venue

Four Points by Sheraton

333 South Service Road
Plainview, NY 11803
516-694-6500
www.fourpoints.com/plainview
Approximately 10 minutes from venue

The Huntington Hilton

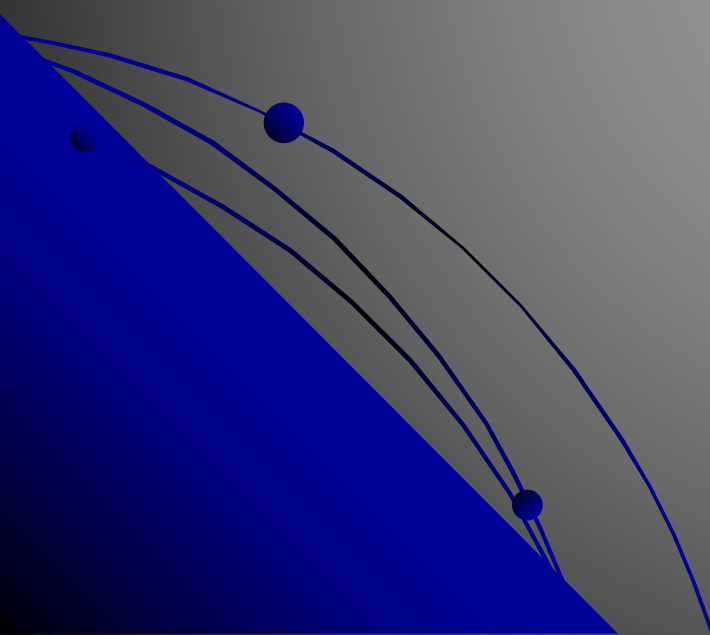
598 Broad Hollow Road
Huntington, NY 11747
(631)-845-1000
www.hiltonlongisland.com
Approx. 15 minutes from venue

Long Island Marriott

101 James Doolittle Boulevard
Uniondale, New York 11553
(516)-794-3800
www.marriott.com
Approx. 15 minutes from venue

LOCAL RESTAURANTS

- Frank's Steaks (Continental) Expensive 516-338-4595
- Tommy's Kitchen (Chinese) Moderate 516-822-2777
- Chili's (Mexican/Burgers) Moderate 516-222-7001
- Village Deli (Sandwiches) Moderate 516-333-4311
- Mamma Felicia pizza Moderate 516-334-1141
- Jani (Japanese) Moderate 516-433-0622



DIRECTIONS

- **From North of Long Island**

- New York State thruway, South to the Cross Bronx Expressway or the New England Thruway (I95) South to the Throgs Neck Bridge. Go over bridge to the Clearview Expressway. Follow to the Long Island Expressway (East). Follow Long Island Expressway to Exit 40W, Mineola. Go to the traffic light and turn right onto route 25. Get into the left lane immediately and make first left at the light onto Brush Hollow Rd. The NYCB Theatre at Westbury is about ½ mile on the left. Drive down the hill and go towards the left hand side of the building. Backstage door is next to the loading dock.

- **From South of Long Island**

- New Jersey Turnpike North to exit 13 Elizabeth. Follow to Goethals Bridge. Cross bridge and pick up (278) Staten Island Expressway. Follow (278) to Verrazano Narrow Bridge, cross bridge and follow to Brooklyn Queens Expressway. Follow to Long Island Expressway (495) East to exit 40W, Mineola. Go to the first traffic light and turn right onto Route 25. Get into the left lane immediately and make the first left at the light onto Brush Hollow Road. The NYCB Theatre at Westbury is about ½ mile on the left. Drive down the hill and go towards the left hand side of the building. Backstage door is next to the loading dock.

- **From West of New York**

- Route 80 to the George Washington Bridge. Cross bridge and follow signs to the Cross Bronx Expressway. Go to the Throgs Neck Bridge. Cross bridge and go straight to the Clearview Expressway. Follow to the Long Island Expressway East (495). Follow to exit 40W, Mineola. Go to the first traffic light and turn right onto Route 25. Get to the left lane immediately and make the first left onto Brush Hollow Road. The NYCB Theatre at Westbury is about ½ mile on the left. Drive down the hill and go towards the left hand side of the building. Backstage door is next to the loading dock.

- **From East of New York**

- Take the Long Island Expressway West (495) to exit 40 W, Mineola. Go down the ramp merge into the left hand lane. Go under the overpass to the second traffic light and make a left onto Brush Hollow Road (As you turning onto Brush Hollow Road the 7/11 will be on your right hand side). The NYCB Theatre at Westbury is about ½ mile on the left. Drive down the hill and go towards the left hand side of the building. Backstage door is next to the loading dock.

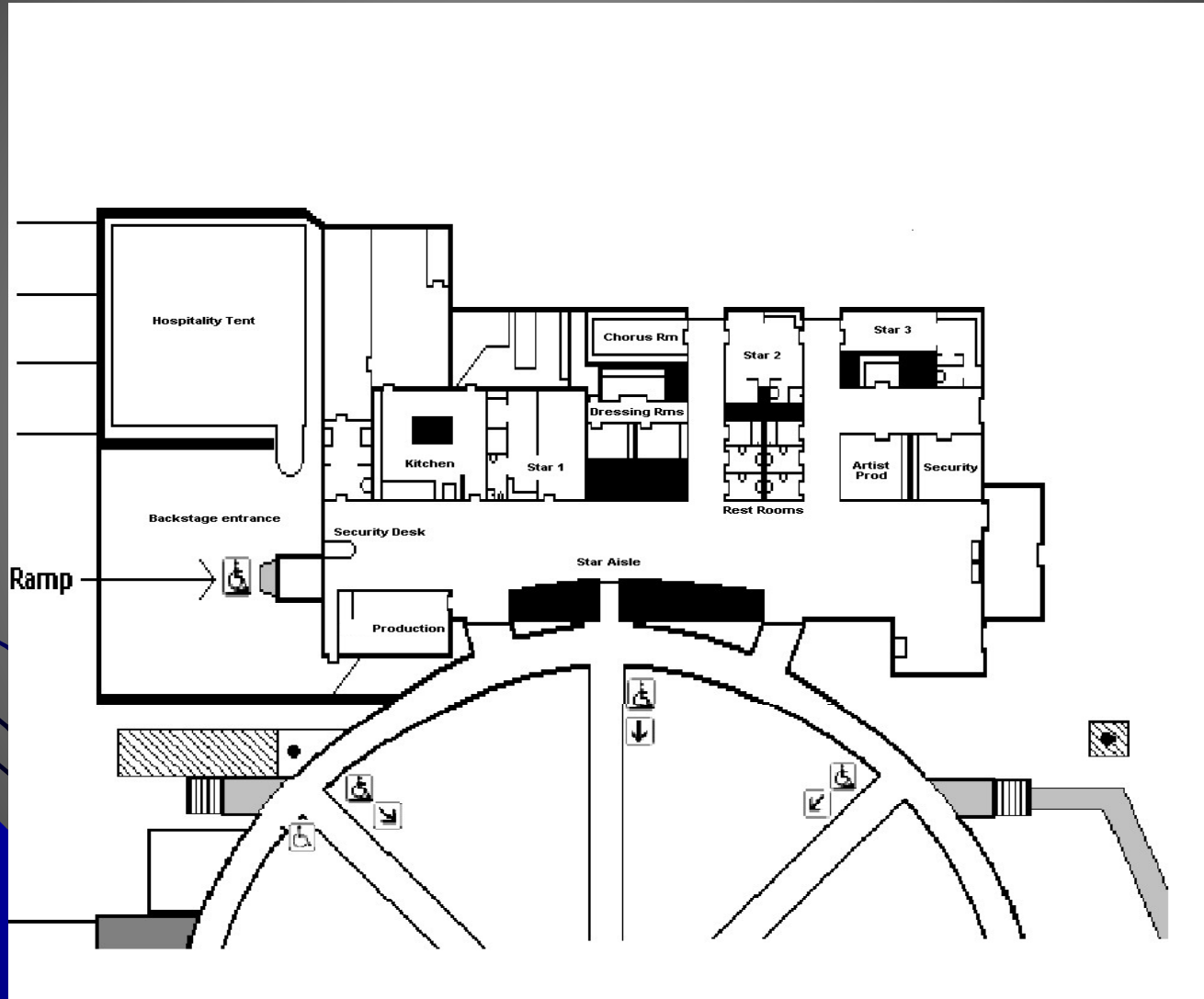
- **From New York**

- Queens Midtown Tunnel to the Long Island Expressway to exit 40W, Mineola. Go to the first traffic light and turn right onto Route 25. Get into the left lane immediately and turn left at the next light onto Brush Hollow Road. The NYCB Theatre at Westbury is about ½ mile on the left.

- **Alternate Route From New York (Cars Only)**

- Triboro Bridge to Grand Central Parkway. This becomes the Northern State Parkway when you cross into Nassau County. Go to exit 34, Brush Hollow Road, make a right at the traffic light. The NYCB Theatre at Westbury is a few hundred feet on the right.

BACKSTAGE / DRESSING ROOMS

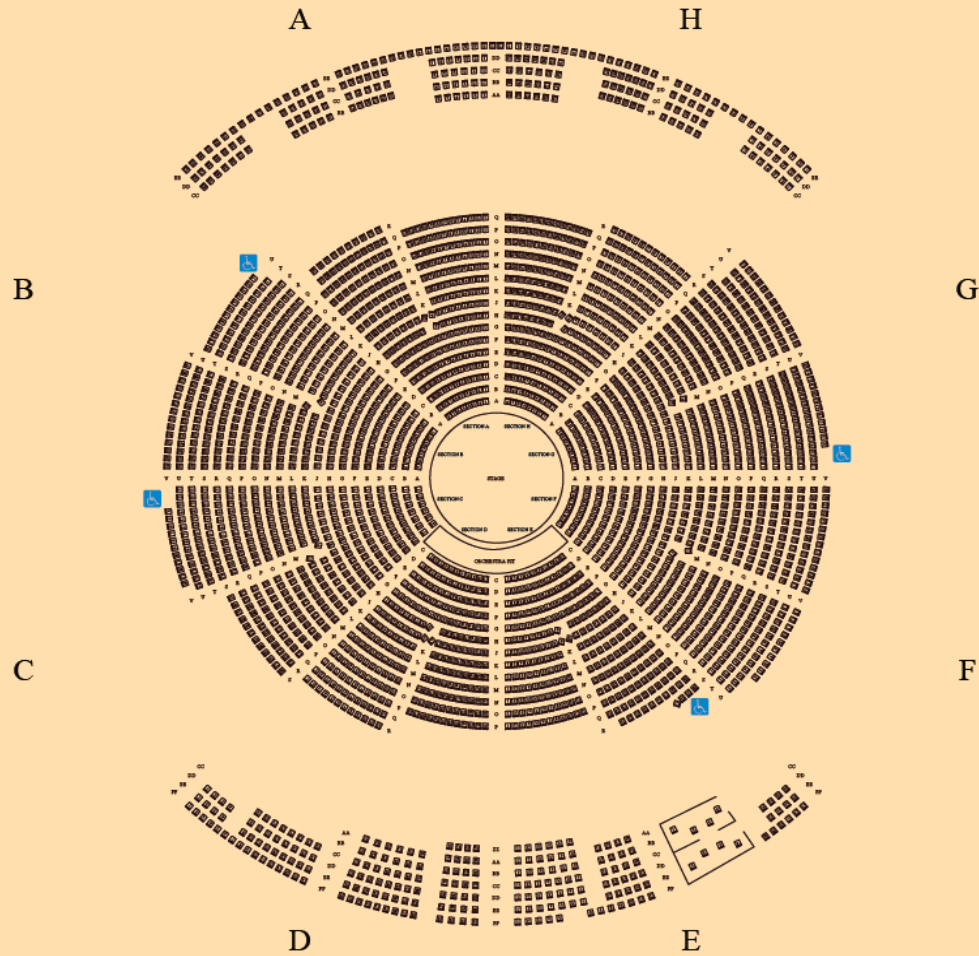


SEATING CHART



Theatre at Westbury

NEW YORK COMMUNITY BANK THEATRE AT WESTBURY



- In the Half Round configuration Sections A and H are curtained off .

THEATRE DIAGRAM

